



REMOTE CONTROLLER
OWNER'S MANUAL




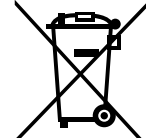
16117000002881
CA14R-RG10L1(U2HS)
2022.12.02

1. QUICK START	2
2. DISPLAY AND BUTTONS	3
2.1 Display	3
2.2 Buttons	4
3. HOW TO USE BASIC FUNCTIONS	5
3.1 Basic Operations	5
3.2 Timer Function	6
4. HOW TO USE ADVANCED FUNCTIONS	7

CAUTION

INSTRUCTIONS OF USING WIRELESS REMOTE CONTROL

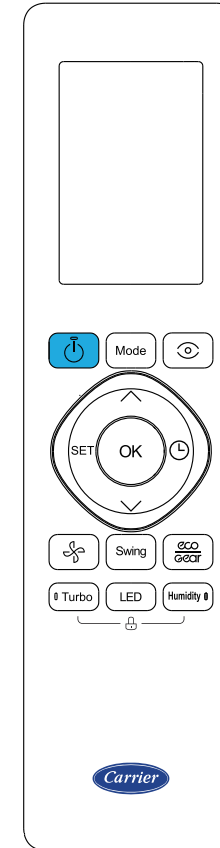
- The remote control uses two alkaline batteries (1.5 Volts).
- Do not use old batteries or batteries of different types, as this may cause the controller malfunction.
- If you do not use the remote control for more than two months, please remove the batteries. Otherwise battery leakage may damage the remote control.
- The average battery life during normal use is approximately half a year.
Replace the batteries when there is no receiving beep coming from the indoor unit or transmission indicator  on the remote control fails to light.
- The maximum operating distance for the remote control is approximately 8 meters.
- The transmitter of remote control must be directed toward the receiver of indoor unit when pressing the buttons of the desired functions. An acoustical acknowledgement sound (beep) will indicate that signal has been received.
- Avoid obstacles obstructions such as curtains, doors or other materials between the remote control and the receiver of indoor unit to avoid blocking the signals from the remote control to the indoor unit.
- Avoid direct sunlight on the receiver of indoor unit, which may interfere with good signal reception and the air conditioner may not work properly. Draw the curtains to avoid direct sunlight.
- Keep the remote control away from water. Do not let the remote control fall down.
- Never use objects with sharp point to press the button on the remote control.
- Prevent any liquid from falling into the remote control.
- If other electric applications react to the remote control, move these applications.
- Do not dispose of batteries as unsorted municipal waste. Refer to local laws for proper disposal of batteries.



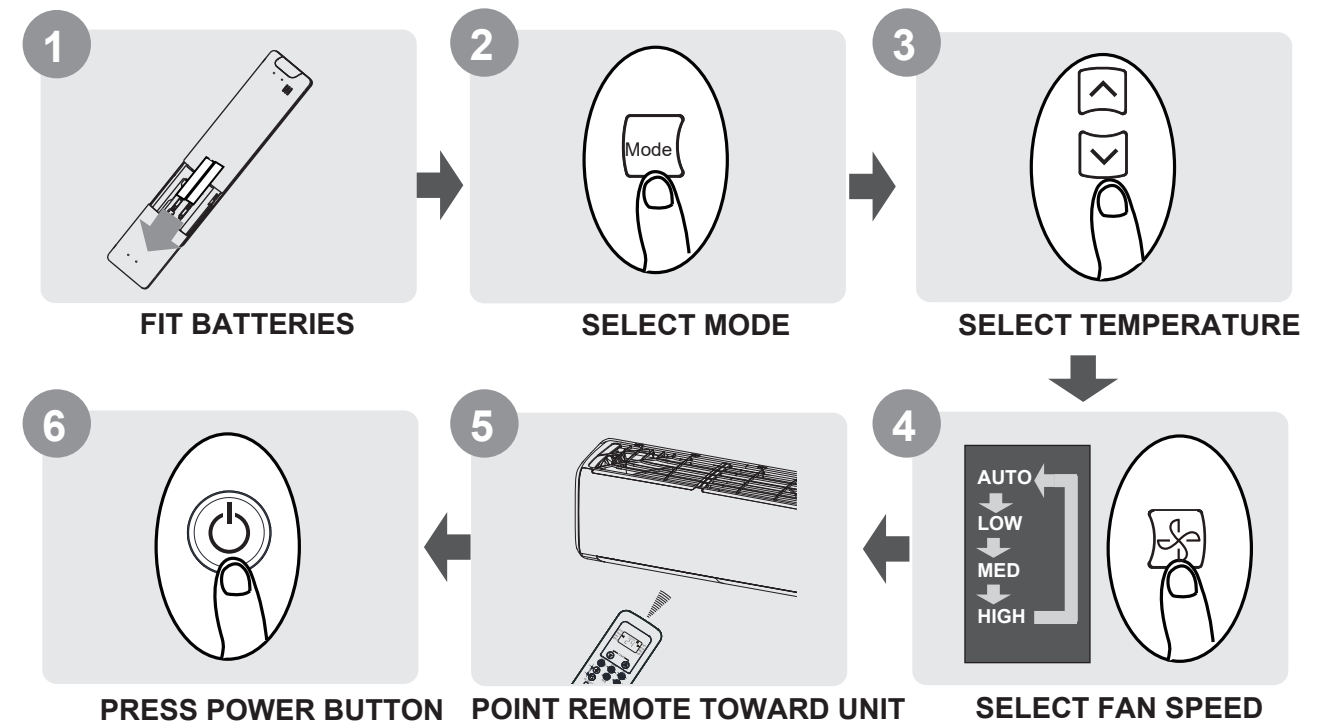
Correct Disposal of Battery

- This marking printed in the batteries attached to your Air Conditioning product is information for end-users .
- Batteries, at their end-of-life, should be disposed of separately from general household waste. Please, dispose of batteries correctly at your local community waste collection or the recycling center.

1. QUICK START



MODEL:
RG10L1(U2HS)/BGEF
RG10L1(U2HS)/BGCEF



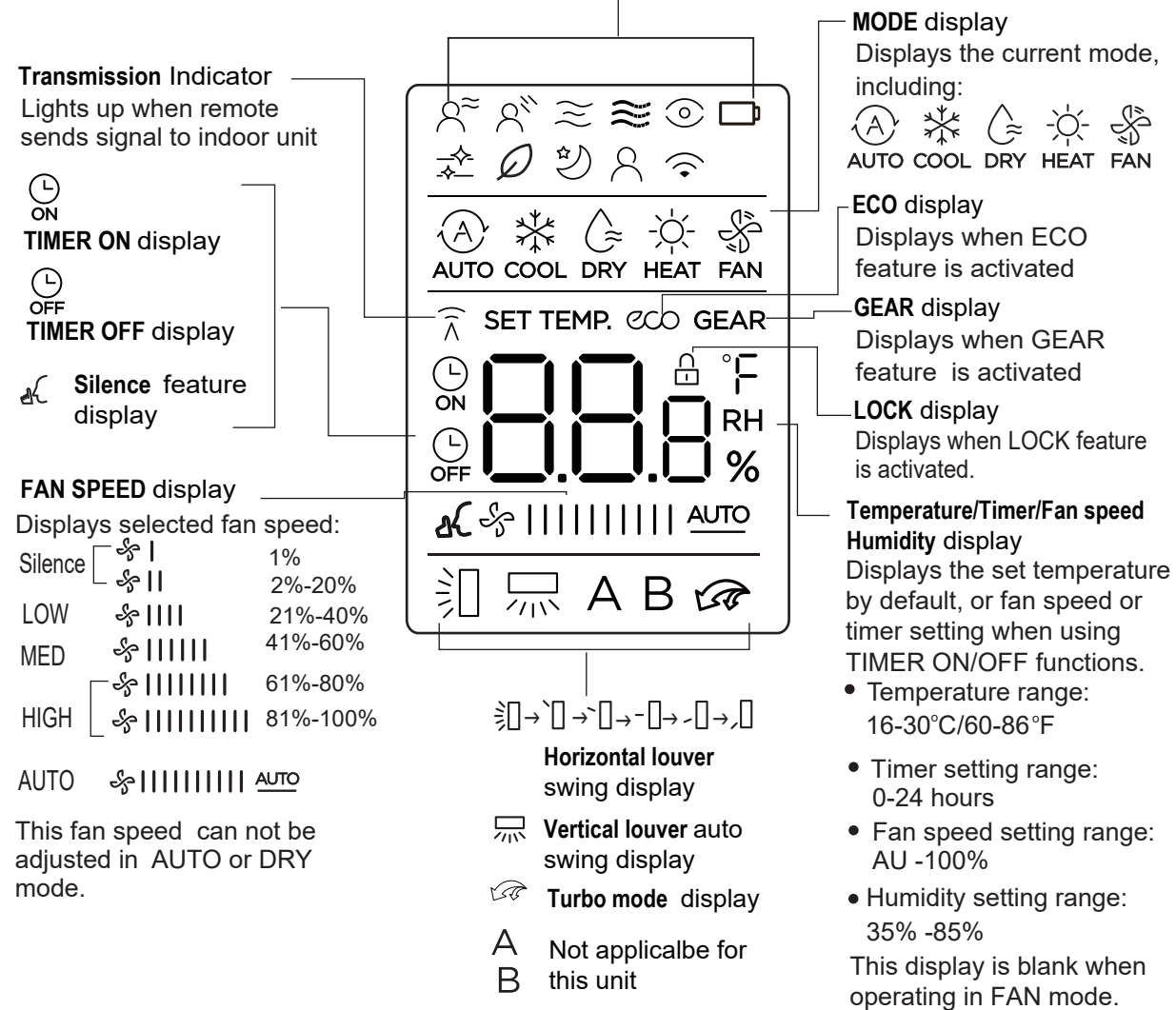
2. DISPLAY AND BUTTONS



2.1 DISPLAY

Information are displayed when the remote controller is power up.

- | | | | |
|--|------------------------------|--|---|
| | Not applicable for this unit | | Active clean feature display |
| | Breeze Away display | | Fresh and UV(if any) feature display |
| | Not applicable for this unit | | Sleep mode display |
| | Not applicable for this unit | | Follow me feature display |
| | Not applicable for this unit | | Wireless control feature display |
| | ECO intelligent eye display | | Low battery detection display(If flashes) |



Note:

All indicators shown in the figure are for the purpose of clear presentation. But during the actual operation, only the relative function signs are shown on the display window.

2.2 BUTTONS

Mode
Press the mode button to switch the mode in turn.
NOTE: HEAT mode is not supported by the cooling only appliance.

On/Off
Press to start operation.
Press again to stop.

Temperature UP
Increases temperature in 0.5 C /1°F increments.
Max. Temp. is 30°C/86°F .

SET
Scrolls through operation functions as follows:
Breeze away* >Active clean> Fresh/UV* > Sleep> Follow Me > AP mode*
The selected symbol will flash on the display area, press the OK button to confirm.
[*]: Model dependent

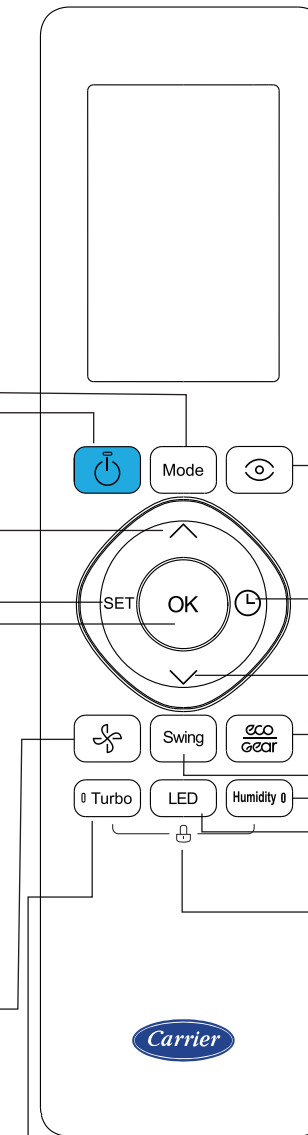
OK
Used to confirm the selected functions.

Fan Speed
Press to select the desired fan speed.

Silence		1%
		2%-20%
LOW		21%-40%
MED		41%-60%
		61%-80%
HIGH		81%-100%
AUTO		AUTO

Turbo
Enables unit to reach preset temperature in shortest possible time.

NOTE: AUTO mode and HEAT mode are not available for Model RG10L1(U2HS)/BGCEF.



Eco Intelligent eye
Used to detect the people activities in the room to save energy.

TIMER
Set timer to turn unit on or off.

Temperature Down
Decreases temperature in 0.5 C/1°F increments. Min. Temp. is 16°C/60°F.
NOTE: Press together ∨ & ∧ buttons at the same time for 3 seconds will alternate the temperature display between the °C & °F.

Eco Gear
Press to enter the energy efficient mode

Swing
Starts and stops the horizontal louver movement. Hold down for 2 seconds to initiate vertical louver auto swing feature(some units).

Humidity
Adjust the room humidity during Dry operation in a range of 35%~85%. Press this button to increase the humidity in 5% increments.
NOTE: After setting, the humidity settings will display on the screen.

LED
Press to turn on/off the LED display. Pressing 5 more seconds to alternate the indoor display between setting temperature and room temperature(Model dependent).

LOCK
Press together Turbo button and Humidity button at the same time more than 5 seconds to activate Lock function.

3. HOW TO USE BASIC FUNCTIONS



3.1 BASIC OPERATIONS

! ATTENTION Before operation, please ensure the unit is plugged in and power is available.

AUTO Mode

Select AUTO mode → Set your desired temperature → Turn on the air conditioner

NOTE:

- In AUTO mode for heat pump system, the air conditioner can automatically choose the mode of Cool, Heat or Fan by sensing the difference between the actual room temperature and setting temperature.
- In AUTO mode for cooling only system, the air conditioner can automatically choose the mode of Cool or Fan by sensing the difference between the actual room temperature and setting temperature.
- In AUTO mode, fan speed can not be set.

COOL or HEAT Mode

Select COOL/HEAT mode → Set the temperature → Set the fan speed → Turn on the air conditioner

DRY Mode

Select DRY mode → Set the temperature → Turn on the air conditioner

NOTE:
In DRY mode, fan speed can not be set since it has already been automatically controlled.

FAN Mode

Select FAN mode → Set the fan speed → Turn on the air conditioner

3.2 TIMER FUNCTION

TIMER ON/OFF - Set the amount of time after which the unit will automatically turn on/off.

TIMER ON

Press TIMER button to initiate the ON time sequence. → Press Temp. up or down button for multiple times to set the desired time to turn on the unit. → Point remote to unit and wait 1sec, the TIMER ON will be activated.

TIMER OFF

Press TIMER button to initiate the OFF time sequence. → Press it for multiple times to set the desired time to turn off the unit. → Point remote to unit and wait 1sec, the TIMER OFF will be activated.

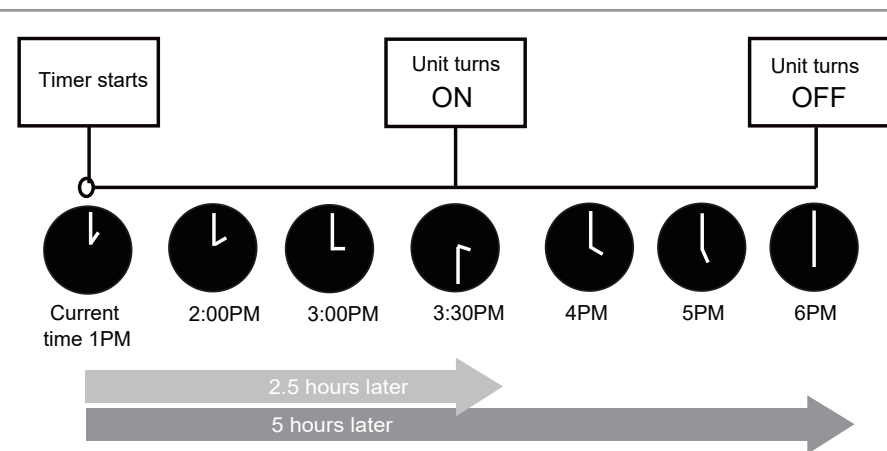
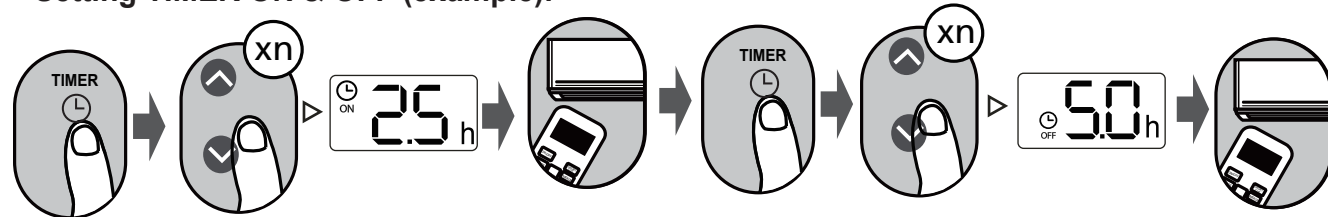
NOTE:

- When setting the TIMER ON or TIMER OFF, the time will increase by 30 minutes increments with each press, up to 10 hours. After 10 hours and up to 24, it will increase in 1 hour increments. (For example, press 5 times to get 2.5h, and press 21 times to get 11h.) The timer will revert to 0.0 after 24.
- Cancel either function by setting its timer to 0.0h.

4. HOW TO USE ADVANCED FUNCTIONS



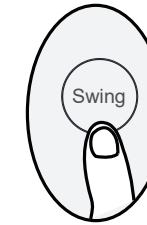
Setting TIMER ON & OFF (example).



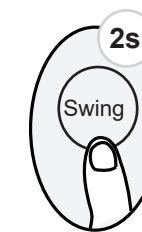
Example: If current timer is 1:00PM, to set the timer as above steps, the unit will turn on 2.5h later (3:30PM) and turn off at 6:00PM.

Swing

Press Swing button when the unit is turned on.



The horizontal louver will swing up and down automatically when pressing Swing button. Press again to make it stop.



Keep pressing this button more than 2 seconds, the vertical louver swing function is activated. (Model dependent)

If continue to press the SWING button, five different airflow directions can be set (Model dependent). The louver can be move at a certain range each time you press the button. Press the button until the direction you prefer is reached.

NOTE: When the unit is off, press and hold MODE and SWING buttons together for one second, the louver will open for a certain angle, which makes it very convenient for cleaning. Press and hold MODE and SWING buttons together for one second to reset the louver (some units only).

Eco Gear

Press this button under COOL Mode to enter the energy efficient mode.



Press this button to enter the energy efficient mode in a sequence of following:
ECO → GEAR(75%) → GEAR(50%) → Previous setting mode → ECO.....

Note: This function is only available under COOL mode.

ECO operation:

Under cooling mode, press this button, the remote controller will adjust the temperature automatically to 24°C/75°F, fan speed of Auto to save energy (only when the set temperature is less than 24°C/75°F). If the set temperature is above 24°C/75°F, press this button, the fan speed will change to Auto, the set temperature will remain unchanged.

Note:

Pressing the this button, or modifying the mode or adjusting the set temperature to less than 24°C/75°F will stop ECO operation.

Under ECO operation, the set tmeperature should be 24°C/75°F or above, it may result in insufficient cooling. If you feel uncomfortable, just press this button again to stop it.

GEAR operation:

Press the Eco/Gear button to enter the GEAR operation as following:

75%(up to 75% electrical energy consumption) → 50%(up to 50% electrical energy consumption) → Previous setting mode.

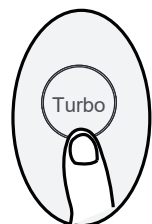
Under GEAR operation, the display on the remote controller will alternage between electical energy consumption and set temperature.

4. HOW TO USE ADVANCED FUNCTIONS



Turbo

Press this button

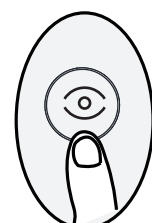


The unit will operate at the biggest capacity output to reach the setting Temp. quickly.

Press this button to activate Turbo feature. It enables the unit to reach the set temperature in the shortest time. Press it again to disable it.(Model dependent)

ECO Intelligent Eye

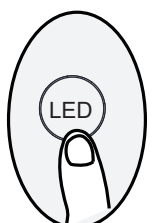
Press this button



Under ECO Intelligent eye mode, with the built-in infrared sensor, the unit can detect the people's activities in the room. In Cooling/Heating mode ,when you are away for 30 minutes, the unit automatically lowers the frequency to save energy(for inverter models only). And the unit will automatically resume operation if sensing human activity again.

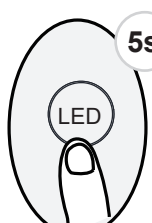
LED

Press LED button



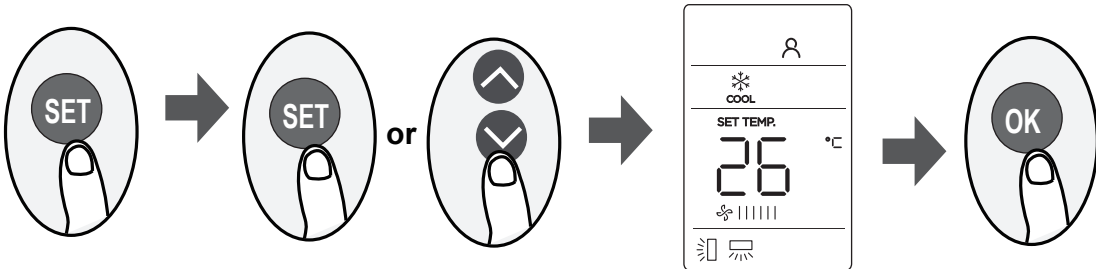
Press this button to turn on and turn off the display on the indoor unit.

Press this button more than 5 seconds



Keep pressing this button more than 5 seconds, the indoor unit will display the actual room temperature. Press more than 5 seconds again will revert back to display the setting temperature(Model dependent).

SET



- Press the SET button to enter the function setting, then press SET button or TEMP ↓ or TEMP ↑ button to select the desired function. The selected symbol will flash on the display area, press the OK button to confirm.
- To cancel the selected function, just perform the same procedures as above.
- Press the SET button to scroll through operation functions as follows:
Breeze away* (🌀) → Active clean (🧼) → Fresh/UV* (🌿) → Sleep(😴) → Follow Me(👤) → AP mode* (📶) → Breeze away....
[*]: Model dependent

Breeze Away function(🌀) (some units) :
This feature avoids direct air flow blowing on the body and makes you feel indulging in silky coolness.
NOTE: This feature is available under cool, Fan and Dry mode only.

Active clean function(🧼) (some units) :
The Active Clean Technology washes away dust, mold, and grease that may cause odors when it adheres to the heat exchanger by automatically freezing and then rapidly thawing the frost. When this function is turned on, the indoor unit display window appears "CL", after 20 to 45 minutes, the unit will turn off automatically and cancel CLEAN function.

FRESH/UV lamp function(🌿) (some units) :
When the FRESH function is initiated, both the Ionizer(if any) and UV lamp(if any) function are energized and will help to remove pollen and impurities from the air.

Sleep function(😴) (some units) :
The SLEEP function is used to decrease energy use while you sleep(and don't need the same temperature settings to stay comfortable). This function can only be activated via remote control. For the details, see "Sleep operation" in "USER'S MANUAL".
NOTE: The SLEEP function is not available in FAN and DRY mode.

Follow me function(👤) :
The FOLLOW ME function enables the remote control to measure the temperature at its current location and send this signal to the air conditioner every 3 minutes interval. When using AUTO, COOL or HEAT modes, measuring ambient temperature from the remote control(instead of from the indoor unit itself) will enable the air conditioner to optimize the temperature around you and ensure maximum comfort.
NOTE: Press and hold Turbo button for seven seconds to start/stop memory feature of Follow Me function.

- If the memory feature is activated, "On" displays for 3 seconds on the screen.
- If the memory feature is stopped, "OF" displays for 3 seconds on the screen.
- While the memory feature is activated, press the ON/OFF button, shift the mode or power failure will not cancel the Follow me function.

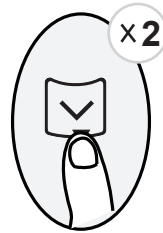
AP function(📶)(some units) :
Choose AP mode to do wireless network configuration. For some units, it doesn't work by pressing the SET button. To enter the AP mode, continuously press the LED button seven times in 10 seconds.

4. HOW TO USE ADVANCED FUNCTIONS



Press this button 2 times during one second under HEAT Mode and setting temperature of 16°C/60°F.

F.P.



The unit will operate at high fan speed (while compressor on) with temperature automatically set to 8°C/46°F.

Note: This function is for heat pump air conditioner only.

Press this button 2 times under HEAT Mode and setting temperature of 16°C/60°F to activate the freeze protection function. It will help to keep the room above 0°C/32°F (freezing point) in severe cold winter. Press On/Off, Sleep, Mode, Fan and Temp. button while operating will cancel this function.

NOTES FOR USING REMOTE CONTROL

The device could comply with the local national regulations.

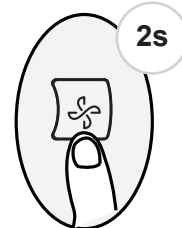
- In Canada, it should comply with CAN ICES-3(B)/NMB-3(B).
- In USA, this device complies with part 15 of the FCC Rules. Operation is subject to the following two conditions:
 - (1) This device may not cause harmful interference, and
 - (2) this device must accept any interference received, including interference that may cause undesired operation.

This equipment has been tested and found to comply with the limits for a Class B digital device, pursuant to part 15 of the FCC Rules. These limits are designed to provide reasonable protection against harmful interference in a residential installation. This equipment generates, uses and can radiate radio frequency energy and, if not installed and used in accordance with the instructions, may cause harmful interference to radio communications. However, there is no guarantee that interference will not occur in a particular installation. If this equipment does cause harmful interference to radio or television reception, which can be determined by turning the equipment off and on, the user is encouraged to try to correct the interference by one or more of the following measures:

- Reorient or relocate the receiving antenna.
- Increase the separation between the equipment and receiver.
- Connect the equipment into an outlet on a circuit different from that to which the receiver is connected.
- Consult the dealer or an experienced radio/TV technician for help.
- Changes or modifications not expressly approved by the party responsible for compliance could void user's authority to operate the equipment.

Keep pressing Fan button for more than 2 seconds to activate/disable Silence function.

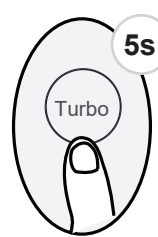
Silence



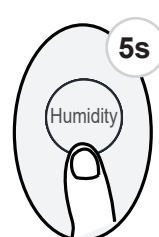
Due to low frequency operation of compressor, it may result in insufficient cooling and heating capacity. Press ON/OFF, Mode, Sleep button, turn on F.P. or Self clean function while operating will cancel silence function. (Model dependent)

Press together Turbo button and Humidity button at the same time more than 5 seconds to activate

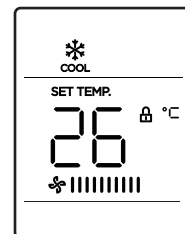
Lock Mode



+



→



Lock symbol displays

At lock mode, all buttons will not response except pressing these two buttons for two seconds again to disable locking.

此页无需印刷

图纸要求:

材质: 双胶纸**80g**

尺寸: **A3**纸对折为**A4**,尺寸: 210*290

封面封底双色套印, 内页黑白。

封面套印开利蓝**pantone 072 (C100, M85, Y0, K0)**